

Airaid

Installation Instructions

For Part Numbers:

300-348 700-461 Airaid Oiled Media Filter

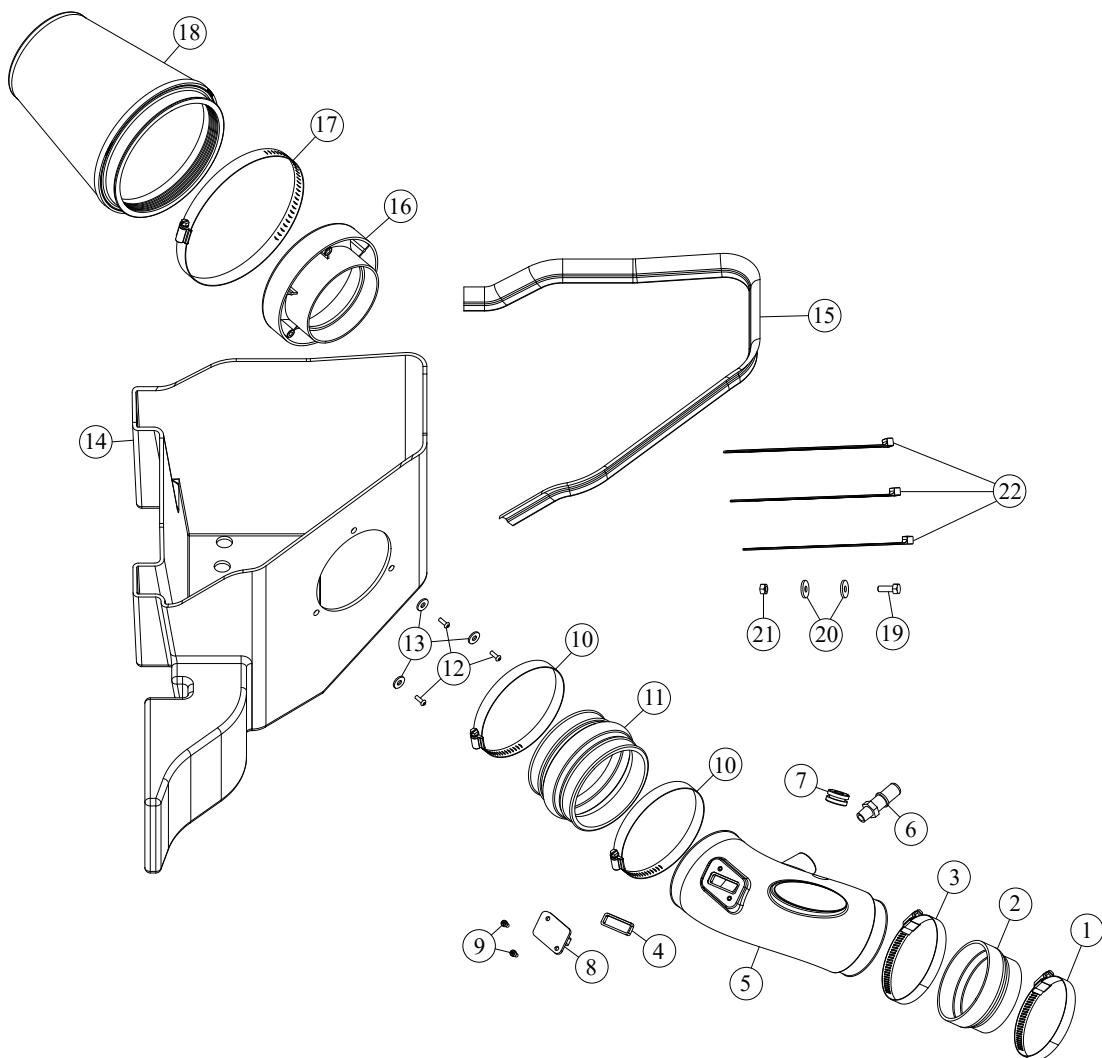
301-348 701-461 SynthaMax Dry Media Filter - Red

2014-18 RAM 2500 / 3500

V8-6.4L

NOT LEGAL FOR SALE OR USE ON ANY POLLUTION CONTROLLED MOTOR VEHICLE IN CALIFORNIA OR STATES ADOPTING CALIFORNIA EMISSION PROCEDURES.

See Airaid.com for CARB status on each part for a specific vehicle



Component Identification

1	HOSE CLAMP #56	1	08620
2	REDUCER; 3.75"ID X 3.38"ID	1	KITRDCR14
3	HOSE CLAMP #60 STAINLESS	1	08628
4	GASKET; MASS AIR SENSOR	1	09076
5	TUBE; INTAKE, 30%-348	1	KIT348A
6	VENT; 1/4 NPT QUICK CONNECT	1	082628
7	GROMMET; 1"OD, 1/2"ID, 1/2"THK	1	08064
8	BLOCK OFF PLATE; MASS AIR	1	KIT348BP
9	BOLT; M4 - 0.07 8MM, A/H CAP, SS	2	07733
10	CLAMP; #72 SS 9/16"	2	KITHS72
11	HUMP HOSE; 4.25"ID X 3"L	1	KITHUMPHS05EPDM
12	BOLT; 1/4-20 X 1/2" BUTTON, SS	3	07706
13	WASHER; 1/4"ID X 5/8"OD - SAE	3	08275
14	AIR BOX; COLD 30%-348	1	KIT348CABA
15	WINDSHIELD WIPER BLADE	1	KITSTRIP26
16	ADAPTER; MAF PLASTIC 112-1	1	KIT1121MAFADA
17	CLAMP; #104 SS 9/16"	1	KITHS104
18	FILTER	1	700-461/701-461
19	BOLT; 1/4-20 X 5/8" HEXHEAD	1	08315
20	WASHER; 1.25"OD X .28 HOLE	2	08151
21	NUT; 1/4"-20, NYLOCK, SS	1	07519
22	CABLE TIES; 11" BLACK	3	21590

Full color instructions can be viewed on our web site at Airaid.com. If you need any assistance please call 1-800-858-3333 to speak with a representative in our Customer Service Center before returning the product.

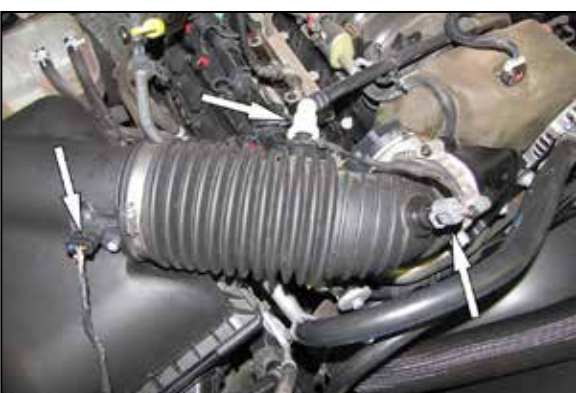
TO START:

1. Turn off the ignition and disconnect the negative battery cable.

NOTE: Disconnecting the negative battery cable erases pre-programmed electronic memories. Write down all memory settings before disconnecting the negative battery cable. Some radios will require an anti-theft code to be entered after the battery is reconnected. The anti-theft code is typically supplied with your owner's manual. In the event your vehicles anti-theft code cannot be recovered, contact an authorized dealership to obtain your vehicles anti-theft code.



2. Lift the decorative engine cover up and remove it from the vehicle.



3. Disconnect the mass air sensor and inlet air temperature sensor electrical connections and disconnect the crank case vent quick connect fitting.



4. Loosen the hose clamp that secures the factory intake tube to the throttle body, release the four clips that secure the upper air filter housing and then remove the upper air filter housing and intake tube from the vehicle.



5. Lift the lower air filter housing up and then remove the housing from the vehicle.

NOTE: Airaid recommends that customers do not discard factory air intake.

NOTE: Some model will have the A/C lines and heater hose tube secured to the lower air filter housing. Remove the two bolts that secure the heater hose tube and unsnap the A/C lines before removing the housing from the vehicle.



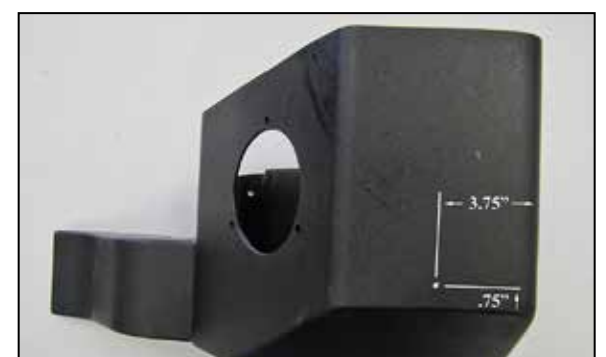
6. Remove the two upper filter housing bracket mounting bolts.



7. Install the filter adapter into the air box as shown and secure with the provided hardware.



8. Remove three of the factory mounting grommets from the factory air filter housing and install them as shown into the AIRAID® air filter housing.



8a. On model that have the A/C lines and heater hose tube secured to the factory air filter housing, drill a 1/4" id hole as shown to secure the heater hose tube.

Continued...



9. Install the provided wiper trim onto the AIRAID® filter housing as shown.

NOTE: Some trimming of the seal will be required.



10. Install the AIRAID® filter housing onto the factory air filter housing mounting studs and secure with the hardware provided.

NOTE: On models that have the A/C lines and heat hose tube secured to the factory air filter housing, use the provided hardware to secure the heater hose tube to the AIRAID® air filter housing using the factory clamp that is attached to the heater hose tube. Use the provided tie wraps to secure the A/C lines once the heater hose tube is secured.



11. Remove the mass air sensor and inlet air temperature sensor from the factory air filter housing and install them into the AIRAID® intake tube with the provided hardware and grommet.

NOTE: Some vehicles may not be equipped with the mass air sensor, If your vehicle does not have a mass air sensor install the provided block off and gasket.



12. Install the provided quick connect vent fitting and AIRAID® decal onto the AIRAID® intake tube as shown. **NOTE: Plastic NPT fittings are easy to cross thread. Install the vent fitting "hand" tight, then turn it two complete turns with a wrench.**



13. Install the provided step coupler onto the AIRAID® intake tube as shown.



14. Install the provided hump coupler onto the filter adapter as shown.



15. Install the AIRAID® intake tube into the hump coupler and onto the throttle body, adjust the tube and couplers for best fit and then secure with the provided hose clamps.



16. Connect the crank case vent to the fitting installed into the AIRAID® intake tube. Reconnect the mass air sensor and inlet air temperature sensor electrical connections.



17. Install the air filter onto the filter adapter and secure with the provided hardware.



18. Reinstall the decorative engine cover.



19. Double check your work!

Make sure there is no foreign material in the intake path. Make sure all clamps, hoses, bolts, and screws are tight. Double check the hood clearance!

Reconnect the negative battery cable!

Thank you for purchasing the Airaid Intake System. Contact Airaid @ (800) 498-6951 8:00 AM - 5:00 PM MST weekdays for questions regarding fit or instructions that are not clear to you. Your Airaid Intake System was carefully inspected and packaged. Check that no parts are missing, or were damaged during shipping. If any parts are missing, contact Airaid. The air filter element is protected from direct exposure to water and debris; care should be taken not to drive through deep water.

WATER INGESTION IS THE DRIVERS RESPONSIBILITY! The air filter is reusable and should be cleaned periodically.

FILTER IDENTIFICATION

700-461 Airaid Oiled Media

701-461 Airaid SynthaMax Dry Media - Red

For your Oiled media filter we offer the Airaid Tune Up Kit!



P/N 790-551 Aerosol Spray
P/N 790-550 Squeeze Spray



NOT LEGAL FOR SALE OR USE ON ANY POLLUTION CONTROLLED MOTOR VEHICLE IN CALIFORNIA OR STATES ADOPTING CALIFORNIA EMISSION PROCEDURES.

See Airaid.com for CARB status on each part for a specific vehicle

SynthaMax

Do Not Oil

Synthamax Air Filters do not require oil. Service air filter as needed by cleaning with common non-petroleum all-purpose household cleaner and water. Simple Green®, Formula 409® or equivalent works great. Apply cleaner to outside of air filter and allow to soak. Then flush filter clean from the inside out with a garden hose and repeat steps if necessary. Do not apply high pressure water or air to clean filter. Allow filter to air dry and reinstall.